

RERA Registration Number
K-RERA/PRJ/ERN/085/2023



PREMIUM APARTMENTS



Siddhi Homes

Uthram, 16/402 C, Ambily Nagar, Thripunithura
info@siddhihomes.com | www.siddhihomes.com
0484 2779555, 96456 99000, 81368 27111



...IN RHYTHM WITH THRIpunithura!





IN THE LAND OF THRIPUNITHURA!

SIDDHI HOMES. 16 years in the soil of Thripunithura. From here we started, we rose, we flourished and we won the hearts of thousands. For us, Thripunithura is our home and we are overwhelmed with the love and happiness shared by the Siddhi Community we created. Full support during our hard times, heart-warming applause during our achievements; our community is just amazing!

We, SIDDHI HOMES, are happy to share yet another proud announcement for home-seekers. We humbly dedicate another premium apartment complex Siddhi Chandravilasam, IN RHYTHM WITH THRIPUNITHURA. Exclusively designed and well-placed for those who love Rajanagari.





IN THE VIBE OF THRIPUNITHURA!

Chandravilasam, as the name suggests, resonates well with a beautiful, natural, royal ambience where life is as cool as moonlight. It is the latest project from Thripunithura's own builder Siddhi Homes. It is purely for those who love the royal and divine setting of the Rajanagari.

Chandravilasam is a premium apartment project for the chosen few. Here the residents will enjoy all the modern amenities one can think of, without losing any traditional charm of Thripunithura. As we know, Thripunithura is not just another town, it's an emotion. You will love to come back to the lap of Thripunithura, whenever the royal town beckons you with its rich heritage. Simple; this is why Siddhi Homes create Chandravilasam for you!



IN THE LUXURY OF THIRIPUNITHURA!

Siddhi Homes, your trusted builder proudly dedicates a luxury apartment in the heart of Thripunithura, close to Kochi, the most vibrant city of Kerala. Think of living with the vibe of Thripunithura. Live with the rich history, live with the festivals, live with Kerala's cultural heritage.

The apartment presents royal luxury that seamlessly blends contemporary design language and modernity. The grand lobby and every corner of the structure and its surroundings showcase an aesthetic touch that resonates with the needs of the future. If you seek a home that is of affordable luxury, Chandravilasam is the perfect choice for you.



IN THE PEACEFUL AMBIENCE OF THRIpunITHURA!

The apartments are developed into a unique residential project, retaining all its natural ambience. The premium fit & finish ensure an extravaganza in your private spaces. Bespoke interiors with lots of open spaces and rustic furniture create a dreamy ambience. A home well designed for luxury living and a peaceful ambience is best suited for perfect community living. A well-thought-out home created in the midst of all happenings of the town.



IN A STRESS-FREE CORNER OF THIRPUNITHURA!

Having a balcony that you can turn into your own private, peaceful space is a real game changer in an apartment. If you're a plant mom, the space is perfect for setting up your plant babies and providing them with all the sun they need. And if you and your roomies just want to enjoy dinner under the stars, set up a table and chairs to utilize whenever you want to eat outside.

There is a sense of serenity enveloping the atmosphere of Thripunithura. The air here is filled with elegance and a vibrant sense of positivity that awakens every idle mind and grace them with brimming energy. It is pretty well-located in a beautiful place, not far away from the bustling city.



IN THE CHILLING ZONE OF THIRIPUNITHURA!

Modern lifestyle often gives rise to significant levels of stress. Whether a hectic day at work or a busy day attending to your household responsibilities, at the end of the day, it is important to take some time to unwind and relax. This is where the recreational facilities of Chandravilasam come to your aid. Be it indoor or outdoor, Chandravilasam provides you with all the opportunities to have that much-needed break of the day. The rooftop infinity pool, health club and multipurpose hall on the first floor give choices for your peace of mind.



IN THE ACTIVITY ZONE OF THIRIPUNITHURA!

Indulge and relax in the specially designed spaces of the clubhouse. It is your comfort zone. Indoor games area, fitness station and superlative luxury elements make every inch adorable. Children`s play area with a safe and well-arranged kiddies` world makes the ambience an activity space for all.



IN THE HEART OF THRIPUNITHURA!

In line with the other Siddhi Homes architectures, Chandravilasam also prioritizes the needs of its residents and offers nothing short of the finest premium facilities. Well placed in the heart of Rajanagari, it features 23 apartments, including 4BHK, 3BHK, and 2BHK options, along with an eco-friendly terrace and dedicated parking provisions. This magnificent residence is perfectly situated to embrace the tranquillity of Thripunithura while enjoying the metropolitan advantages of Greater Kochi city.



SIDHDI HOMES



KEY PLAN

TYPE - A (3BHK)	
RERA CARPET AREA	1098 SQ.FT
SUPER BUILT-UP AREA	1747 SQ.FT
USABLE CARPET AREA	1235 SQ.FT



SIDHDI HOMES



KEY PLAN

TYPE - B (2BHK)	
RERA CARPET AREA	864 SQ.FT
SUPER BUILT-UP AREA	1351 SQ.FT
USABLE CARPET AREA	949 SQ.FT



TYPE C - TYPICAL FLOOR (1st to 9th floor)
3 BHK



TYPE D - TYPICAL FLOOR (8th & 9th floor)
4 BHK



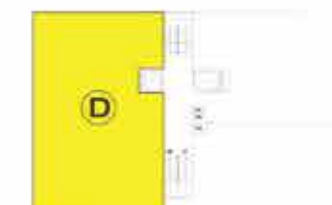
SIDHHI HOMES



KEY PLAN

TYPE - C (3BHK)	
RERA CARPET AREA	1191 SQ.FT
SUPER BUILT-UP AREA	1942 SQ.FT
USABLE CARPET AREA	1360 SQ.FT

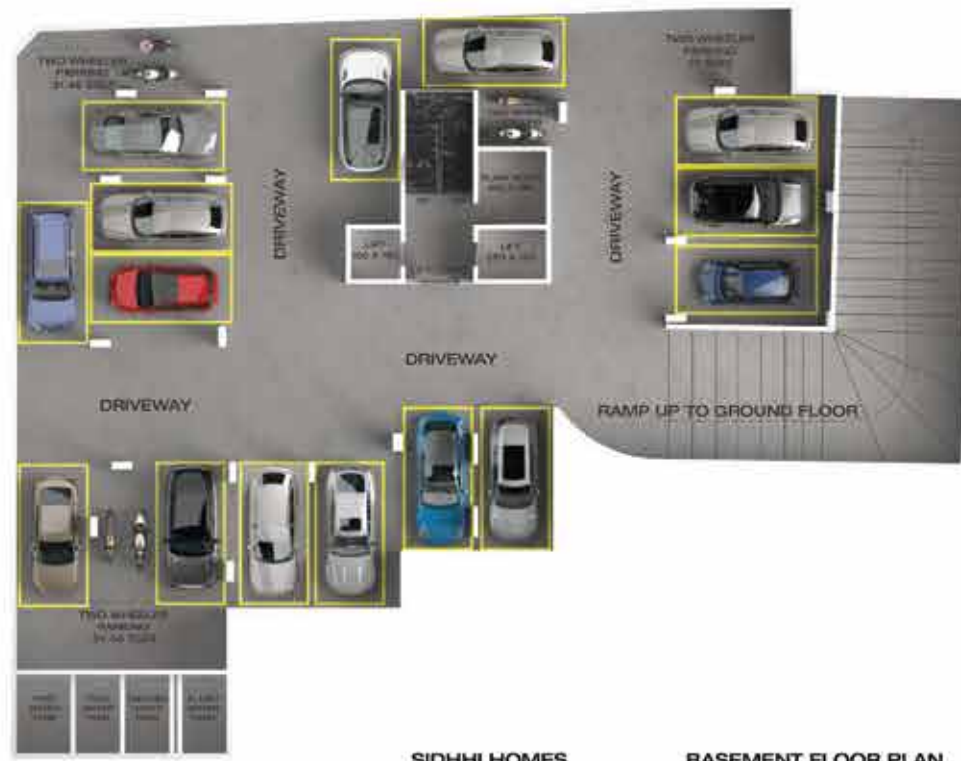
SIDHHI HOMES



KEY PLAN

TYPE - D (4BHK)	
RERA CARPET AREA	1960 SQ.FT
SUPER BUILT-UP AREA	3098 SQ.FT
USABLE CARPET AREA	2211 SQ.FT





SIDHDI HOMES BASEMENT FLOOR PLAN



SIDHDI HOMES FIRST FLOOR PLAN



SIDHDI HOMES GROUND FLOOR PLAN



SIDHDI HOMES TYPICAL FLOOR PLAN 2ND TO 7TH





SIDHHI HOMES

TYPICAL FLOOR PLAN 8th & 9th



SIDHHI HOMES

TERRACE FLOOR PLAN



SPECIFICATION

FOUNDATION

- Necessary RCC foundation on required strata

STRUCTURE

- Reinforced cement concrete frame with solid cement bricks or solid cement blocks in fill walls.
- Earth quake resistance as per IS Standards

FLOORING

- Good quality vitrified tiles with vitrified skirting for Living, Dinning, Kitchen, toilets and in all bedrooms.
- Entrance lobby, staircase & common areas will be of granite/vitrified tiles.

WALL CLADDING

- Ceramic/vitrified wall tile cladding in bathrooms up to false ceiling height.

KITCHEN

- Granite slab kitchen counter, single bowl stainless steel sink with drain board.

TOILET FITTINGS

- White sanitary ware including European water closet and wash basin.
- Good quality chromium plated taps, mixer, shower and towel roads

HARDWARES

- Best quality hardware

DOORS

- Decorative panelled main entrance door in engineered wood
- Factory made moulded/flush doors for bedrooms and toilets

WINDOWS

- Fully glazed powder coated Aluminium /UPVC windows with M.S. grills

PAINTING

- Putty finished emulsion paint for internal walls and enamel paint for window grills, external walls will be emulsion painted.

WATER SUPPLY

- Provision for KWA water supply at one point in kitchen subject to rules and regulations of KWA
- Ground water supply from bore well/open well.

ELECTRICITY SUPPLY

- Concealed copper wire
- Adequate light points, fan points, 6amps and 16amps points, etc. With independent meters for each flat.
- Modular type switches.
- Generator backup up to 1000watts per apartment.

PLUMBING

- Pipe system for domestic, drinking and flushing water distribution

BRAND POOL

WASHROOMS / POWDER ROOMS

- EWC: Kohler/ Vitra/Jaquar/Kerovit
- Wash Basin: Kohler/ Vitra/Jaquar/Kerovit
- Concealed FlushTank: Kohler/Vitra/Jaquar/Kerovit
- CP fittings: Kohler/ Vitra/Jaquar/Kerovit

FLOORING

- Bedroom Floor Tiles:

Kajaria/Somany/Asian/Sunheart

- Living and Dining Floor: Kajaria/Somany/ Asian/Sunheart
- Balcony and Sit out: Kajaria/ Somany/Somany/ Asian/Sunheart
- Kitchen Floor: Kajaria/ Somany/Somany/Asian/Sunheart
- Toilet Floor Tile: Kajaria/Somany/Somany/ Asian/Sunheart



- Toilet Wall tile : Kajaria/Somany/
- Somany/ Asian/Sunheart

DOORS / WINDOWS

- Main Door: Engineered wood frames with architrave and designer engineered wood shutter – Kelachandra/ Kassa/Jacson/Jacwud
- Inside Door and Toilet Door: Kelachandra/ Kassa/Jacson/Jacwud
- Windows: Fully glazed Aluminium/ UPVC windows with high quality M.S.grills
- Main Door Lock: Yale/Dorset/Godrej
- Magnetic catcher: Yale/Dorset/Godrej
- Door Eye: Yale/Dorset/Godrej
- Safety guard: Yale/Dorset/Godrej
- Internal Door Lock: Yale/Dorset/Godrej
- Toilet Door Baby latch: Yale/Dorset/Godrej
- Hinges: Yale/Dorset/Godrej
- Tower Bolt: Yale/Dorset/Godrej

KITCHEN

- Kitchen Sink: Futura/Nirali
- Sink Cock: Kohler/ Vitra/Jaquar
- Waste Coupling: Kohler/ Vitra/Jaquar

PAINT

- Internal Putty: Asian/Berger/Ramco
- Emulsion: Asian/Berger
- Exterior Emulsion: Asian/Berger
- Enamel: Asian/Berger

ELECTRICAL

- Distribution Board: Schneider/ Legrand/Havells
- MCB: Schneider/ Legrand/Havells
- Switches: Schneider/ Legrand/Havells
- Genset: kirloskar/ Cummins
- Transformer: Unipower/Resitech
- Cables: Gloster/ Havells/ Finolex/ Polycab/ V Guard
- Wires: Gloster/ Havells/ Finolex/ Polycab/ V Guard

CEMENT & STEEL

- ISI Branded Items

LIFT

- Kone/OTIS/Schindler/Johnson

AMENITIES & FEATURES

- 2 Bedroom, 3 Bedroom & 4 Bedroom Apartments Landscaped garden
- Grand entrance lobby
- Multipurpose hall at First floor
- Roof top infinity pool
- Health club in first floor
- Video door Phone
- CCTV Camera surveillance
- Access point control
- Entry Boom barrier
- On grid solar system for reducing common area electricity charges
- Indoor games area
- Children's play area
- EV Charging points
- Rain water harvesting
- Guest suite
- One passenger lift & one bed lift
- Access for differently abled
- Centralized gas supply
- 24hours security / water / power
- Maintenance on call
- Ample green space

